

# SAFETY DATA SHEET

## 1. IDENTIFICATION OF SUBSTANCE! PREPARATION AND COMPANY

**Product Name** **Accepta 2529**

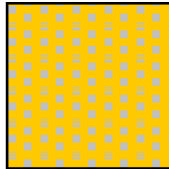
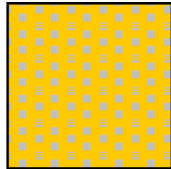
**Application** Liquid chlorine for use in disinfection and sterilisation procedures. Also used in the generation of hypobromous acid. Contains biodispersant.

**Supplier** **Accepta LTD**  
 Statham House, Talbot Road  
 Old Trafford, MANCHESTER, M32 0FP  
 Tel: 0161 877 2334 Fax: 0870 135 6389

## 2. COMPOSITION ! INFORMATION ON INGREDIENTS

| Chemical name                               | CAS No     | % (active) | EINECS-No.         | Symbols      | R-phrases     |
|---|------------|------------|--------------------|--------------|---------------|
| Sodium hypochlorite                         | 7681-52-9  | 5- 15%     | 231-668-3          | C-Corrosive, | R31, R34, , , |
| Sodium polyacrylate                         | 9003-04-7  | 1 - 5%     | Polymer not listed | Xi-Irritant, | R36, , , ,    |
| Didodecyl disulphonated diphenyl oxide (Na) | 28519-02-0 | 1 - 5%     | 249-063-8          | Xi-Irritant, | R36, , , ,    |
|   |            |            |                    | ,            | , , , ,       |
|   |            |            |                    | ,            | , , , ,       |

## 3. HAZARDS IDENTIFICATION



Physical / chemical hazards: Corrosive  
 Contact with acids liberates toxic gas (chlorine)  
 Environmental Hazards: Toxic to wildlife and fish  
 Human health hazards: Causes burns

## 4. FIRST AID MEASURES

**Ingestion:** Causes burns to mouth ,and gastrointestinal tract.

Wash out mouth with water then drink plenty of water. Do not induce vomiting. Obtain medical attention and show this datasheet,

**Inhalation:** Severely irritating of respiratory tract.

Remove to fresh air. Obtain medical advice if symptoms persist.

**Skin contact:** Causes burns

Wash with soap and water. Remove contaminated clothing for washing. Consult doctor in accordance with symptoms.

**Eye contact:** Severe pain. Corneal burns may occur

Immediately rinse eye with sterile water for 20 minutes. Seek medical advice.

**Notes to doctor:** Acute effects dominate

## 5. FIRE FIGHTING MEASURES

|                                 |  |
|---------------------------------|--|
| Flammability:                   | Non-flammable  |
| Extinguishing media:            | Water spray jet, extinguishing powder or foam, carbon dioxide. |
| Unsuitable extinguishing media: | None   |
| Hazardous decompositions:       | Thermal decomposition will evolve Chlorine which is toxic.     |
| Protective equipment:           | Protective clothing and self-contained breathing apparatus.    |

## 6. ACCIDENTAL RELEASE MEASURES

|                            |  |
|----------------------------|--|
| Personal precautions:      | Wear full protective equipment - gloves, eye/face protection and overalls. Ensure sufficient air supply.   |
| Environmental precautions: | Do not allow to enter water courses. Uncontrolled discharges must be alerted to the Environment agency or other appropriate body.                      |
| Methods of clean up:       | Small spillages can be flushed to drain. Larger spillages should be contained and neutralised with sodium thiosulphate before discharge to foul drain. |

## 7. HANDLING AND STORAGE

|                       |   |
|-----------------------|---|
| Handling:             | Avoid direct contact with product. Do not swallow. Before eating, drinking or smoking wash hands with soap and water. Protect from the sun's rays and heat. Do not breathe vapours in a confined space. |
| Storage:              | Store at ambient temperature. Do not allow to freeze. Store away from foodstuffs and acids. After dispensing product, ensure that the container is firmly secured.                                      |
| Shelf life:           | Temperature dependant   |
| Suitable packaging:   | PVC, Polyethylene or polypropylene (dark pigment)   |
| Unsuitable packaging: | Metals and alloys.  |

## 8. EXPOSURE CONTROLS / PERSONAL PROTECTION

|   |          |                       |
|---|----------|-----------------------|
| Exposure limits: Substance:               | Chlorine |                       |
| <small>EH40</small> Long term WEL (8 Hr): | 0.5 ppm  | 1.5 mg/m <sup>3</sup> |
| Short term WEL (15 min):                  | 1 ppm    | 3 mg/m <sup>3</sup>   |

|                                 |  |
|---------------------------------|--|
| Engineering measures:           | Hypochlorite resistant floor necessary   |
| Respiratory protection:         | Not applicable unless aerosol formation possible, in which case appropriate respiratory protection must be worn. |
| Skin, hand and body protection: | Overalls, boots and PVC gloves.  |
| Eye protection:                 | Chemical goggles or face shield.   |

## 9. PHYSICAL AND CHEMICAL PROPERTIES

|                   |                |                         |                              |
|-------------------|----------------|-------------------------|------------------------------|
| Form:             | Solution       | Boiling point (C):      | 110 C                        |
| Colour:           | Green / yellow | Decomposition temp (C): | Decomposes at boiling point. |
| Odour:            | Chlorine       | Specific Gravity:       | 1.256                        |
| Molecular weight: |                | Solubility:             | Completely miscible          |
| pH:               | >12            | Flash point (C):        |                              |

## 10. STABILITY AND REACTIVITY

- Stability: Stable under normal conditions.
- Thermal decomposition: Decomposes at and above boiling point.
- Conditions to avoid: Prolonged excessive heat may cause product decomposition.
- Materials to avoid: Metals and alloys.
- Hazardous reactions: Reacts with acids to release chlorine.
- Decomposition products: Chlorine

## 11. TOXICOLOGICAL INFORMATION (of hazardous constituents)

- Acute toxicity: Oral; Sodium hypochlorite Corrosive  
Dermal: Sodium hypochlorite Corrosive  
Inhalation: Exposure to a mist or spray causes irritation of mouth, throat and digestive tract.  
Eye: Corrosive
- Other data:

## 12. ECOLOGICAL INFORMATION

Biodegradability Degrades rapidly in soil or water.  
and persistence:

Ecotoxic effects: Toxic to aquatic organisms, fish and wildlife.

Other data: The product is substantially removed in biological treatment processes.

## 13. DISPOSAL CONSIDERATIONS

Methods of disposal: Observe decontamination procedures in section 6 before discharging to foul drain. Otherwise all waste must be handled by a licensed waste disposal contractor.

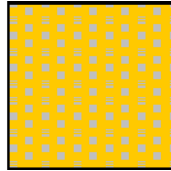
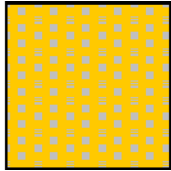
Packaging disposal: Plastic drums will be collected by supplier for recycling. Damaged containers should be destroyed by cutting up or incineration. Empty containers must not be used for potable water.

## 14. TRANSPORT INFORMATION

UN No.: 1791 Proper shipping name: PROPER SHIPPING NAME - HYPOCHLORITE SOLUTION with >5% but <16% available chlorine

| Mode      | Regulation         | Class | Packing group | Ems No. | Stowage | Code | Subsidiary risk |
|-----------|--------------------|-------|---------------|---------|---------|------|-----------------|
| Road/Rail | European - ADR/RID | 8     | III           |         |         |      |                 |
| Sea       | IMO/IMDG           |       |               |         |         |      |                 |
| Air       | ICAO / IATA        |       |               |         |         |      |                 |

## 15. REGULATORY INFORMATION (Classification and labelling according to UK CHIP Regs/EEC Directive 88/379/EEC)



### Risk Phrases

R31 Contact with acids liberates toxic gas

R34 Causes burns

### Safety phrases

S28 After contact with skin, wash immediately with plenty of water.

S36/37/39 Wear suitable protective clothing gloves and eye/face protection

S45 In case of accident or if you feel unwell, seek medical advice immediately (show the label where possible)

S50 Do not mix with acids

## 16. OTHER INFORMATION

The above information is based on current knowledge at the time of publication and is given in good faith. Accepta Ltd implies no warranty as to the suitability of the product for any purpose other than that outlined on the Product Data Sheet.

The information contained in this SDS does not constitute an assessment of work place risks. The customer should undertake a formal COSHH assessment which should ensure that employees are aware of the hazards / precautions detailed in the SDS. The COSHH assessment should ensure that the recommended safety equipment is available and where applicable, that the exposure limits detailed in section 8 are not being exceeded.

References: The Carriage of Goods by Road and Rail Regulations.

The Control of Substances Hazardous to Health Regulations (COSHH).

The Chemicals Hazard Information and Packaging Regulations (CHIP).